

PROJECT SHOWCASE

PARKS & RECREATION



CORDILLERA RANCH COUNTRY CLUB

FACILITY SIZE

Serving 800 homes

COMPLETION DATE

June 2019

LOCATION

1092 Clubs Dr
Boerne, TX 78006

DEMOGRAPHICS

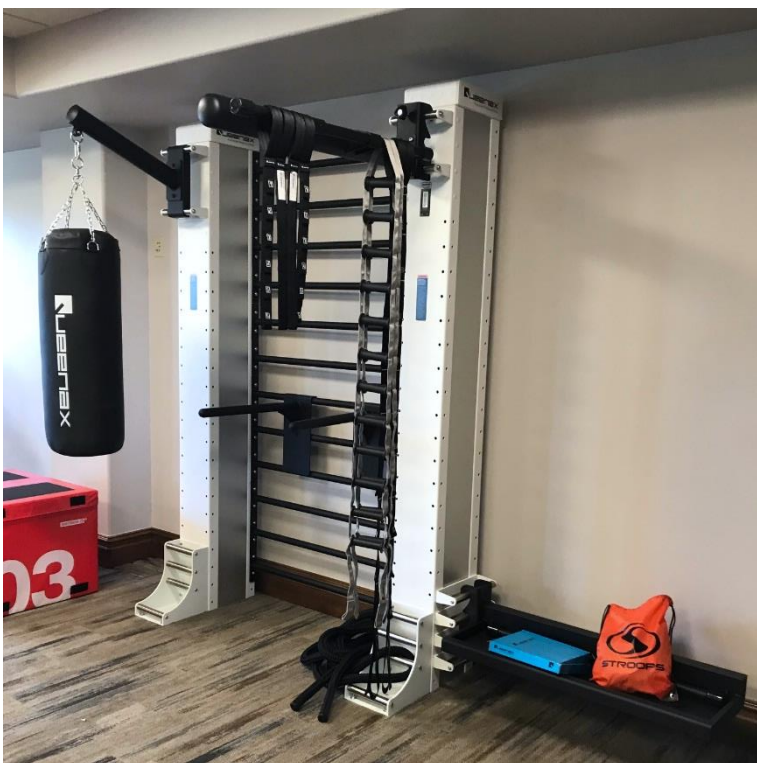
All fitness levels and ages

WEBSITE

www.cordilleraranch.com

TEXAS HILL COUNTRY GETS A RENOVATION

Cordillera Ranch Country Club, which has been a loyal customer with Marathon Fitness since the club opened in May 2007, recently did a complete refresh for their fitness club. Cordillera Ranch upgraded with entirely new top-of-the-line networked P80 Precor cardio 800 series equipment with media adaptors. They elected to have custom colors for their Precor Discovery line strength equipment – sleek Black Pearl frames like their cardio, with burnt sienna upholstery to match the club's colors. Cordillera also gained a new item - the Queenax 2D Wall System to expand their small group and personal training business. This unique showstopper gives all residents a versatile functional workout and has storage built in for a clean look. Cordillera refreshed their fitness club just in time for higher usage during summer, Marathon Fitness received their trade-in equipment in exchange for a discount on the order, and residents can now enjoy a workout using the best of the best – a win for all involved.



Queenax W175 Wall Apps:

- 2 Up Strength
- 1 Stroops Vitl Kit
- 1 Lateral Universal Shelf
- 1 Mobile Parallels
- 1 Battle Rope
- 1 30kg Punching Bag
- 2 Handle Extension Pairs



CARDIO SHORTLIST

800 Series P80 Cardio:

6 Treadmills

4 Adaptive Motion Trainers

3 Elliptical Crosstrainers

3 Recumbent Bicycles

1 Upright Bicycle







DISCOVERY STRENGTH

Converging Chest Press
Converging Shoulder Press
Diverging Lat Pulldown
Rear Delt/Pec Fly
Diverging Low Row

Leg Press
Leg Extension
Seated Leg Curl
Abdominal
Rotary Torso

